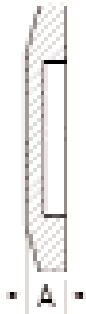


HIGHVAC NW FLANGES AND HARDWARE



BLANK FLANGE - 304 STAINLESS STEEL

PART NUMBER	A	UNIT PRICE
NW16-075-SB	0.20	\$8.00
NW25-100-SB	0.20	\$8.50
NW40-150-SB	0.20	\$14.00
NW50-200-SB	0.20	\$17.00

Used to close off ports not being used

BLANK FLANGE - ALUMINUM

NW16-075-AB	0.20	\$5.25
NW25-100-AB	0.20	\$6.25
NW40-150-AB	0.20	\$10.25
NW50-200-AB	0.20	\$11.25

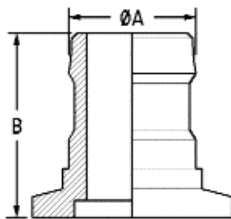
Used to close off ports not being used

BLANK FLANGE - BRASS

NW16-075-BB	0.20	\$6.75
NW25-100-BB	0.20	\$8.50
NW40-150-BB	0.20	\$13.50
NW50-200-BB	0.20	\$17.00

Used to close off ports not being used

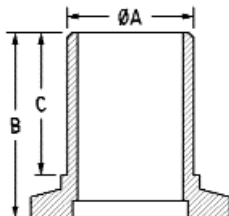
HOSE ADAPTOR - ALUMINUM



PART NUMBER	HOSE SIZE (I.D.)	A	B	UNIT PRICE
NW10-050-H	1/2" or 5/8"	0.63	1.65	\$11.25
NW16-050-H	1/2" or 5/8"	0.63	1.65	\$11.25
NW16-075-H	5/8" or 3/4"	0.75	1.65	\$11.25
NW25-050-H	1/2" or 5/8"	0.63	1.65	\$18.25
NW25-075-H	5/8" or 3/4"	0.75	1.65	\$20.00
NW25-100-H	3/4" or 7/8"	0.88	1.73	\$13.50
NW40-150-H	1-1/2" or 1-5/8"	1.63	2.17	\$18.25
NW50-200-H	1-1/2" or 1-5/8"	1.63	2.17	\$23.00

NW to hose (plastic or rubber)

HOSE ADAPTOR - STAINLESS STEEL



PART NUMBER	HOSE SIZE (I.D.)	A	B	C	UNIT PRICE
NW10-050-SH	1/2"	0.50	1.26	0.79	\$21.50
NW16-050-SH	1/2"	0.50	1.26	0.79	\$23.00
NW16-075-SH	3/4"	0.75	1.26	0.79	\$23.00
NW25-100-SH	1"	1.00	1.50	1.02	\$28.50
NW40-150-SH	1-1/2"	1.50	1.97	1.50	\$34.00
NW50-200-SH	2"	2.00	2.17	1.61	\$43.00

NW to PVC hose, One piece - no welds