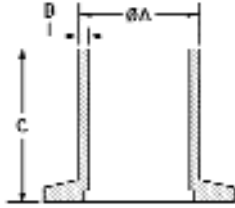


HIGHVAC NW FLANGES AND HARDWARE



LONG BUTT FLANGE - 304 STAINLESS STEEL

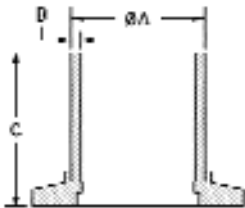
PART NUMBER	TUBE SIZE	A	B	C	UNIT PRICE
NW16-050-ISO	1/2"	.50	.07	1.58	\$15.25
NW16-075-ISO	3/4"	.75	.07	1.58	\$15.25
NW25-100-ISO	1"	1.0	.07	1.58	\$17.50
NW40-150-ISO	1-1/2"	1.50	.07	1.58	\$20.00
NW50-200-ISO	2"	2.00	.07	1.58	\$29.00

Butt weld, traditional inch tube diameters, inexpensive half nipple
Machined from solid bar, no welds

LONG BUTT FLANGE - ALUMINUM

PART NUMBER	TUBE SIZE	A	B	C	UNIT PRICE
NW16-050-ALF	1/2"	.50	.07	1.58	\$9.00
NW16-075-ALF	3/4"	.75	.07	1.58	\$9.00
NW25-100-ALF	1"	1.0	.07	1.58	\$10.25
NW40-150-ALF	1-1/2"	1.50	.07	1.58	\$13.50
NW50-200-ALF	2"	2.00	.07	1.58	\$14.50

Butt weld, traditional inch tube diameters, inexpensive half nipple
Machined from solid bar, no welds

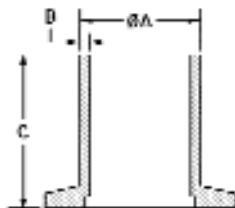


HALF NIPPLE 304 STAINLESS STEEL

PART NUMBER	TUBE SIZE	A	B	C	UNIT PRICE
NW16-075-HN	1/2" & 3/4"	.75	.07	1.50	\$14.00
NW25-100-HN	1"	1.0	.07	2.04	\$17.00
NW40-150-HN	1-1/2"	1.5	.07	2.46	\$19.25
NW50-200-HN	2"	2.0	.07	3.21	\$28.50

Welded construction

Note: -ISO Flange above, can also be used as half nipple



LONG BRAZE WELD FLANGE BRASS

PART NUMBER	TUBE SIZE	A	B	UNIT PRICE
NW16-050-LB	1/2"	.50	1.00	\$10.25
NW16-062-LB	5/8"	.62	1.00	\$10.25
NW16-075-LB	3/4"	.75	1.00	\$10.75
NW16-087-LB	7/8"	.87	1.00	\$10.75
NW25-100-LB	1"	1.00	1.38	\$13.00
NW25-112-LB	1-1/8"	1.13	1.38	\$13.00
NW40-150-LB	1-1/2"	1.50	1.58	\$17.50
NW40-162-LB	1-5/8"	1.62	1.58	\$17.50
NW50-200-LB	2"	2.00	1.58	\$28.00
NW50-212-LB	2-1/8"	2.12	1.58	\$28.00

Traditional inch tube diameters, braze weld