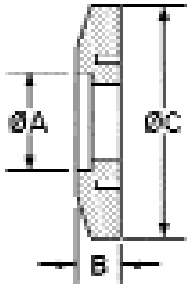


HIGHVAC NW FLANGES AND HARDWARE

NW FLANGE COMPONENTS

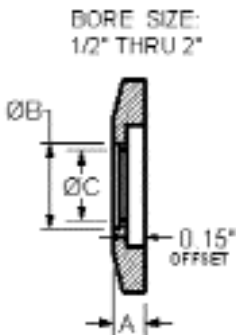
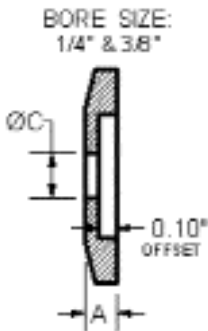
NW REDUCER WELD FLANGE 304 STAINLESS STEEL



PART NUMBER	TUBE SIZE	A	B	C	UNIT PRICE
NW25x10-RW	1x1/2	.51	0.20	1.5	\$11.0
NW25x16-RW	1x3/4	.76	0.20	1.57	\$9.50
NW40x10-RW	1-1/2x1/2	.51	0.20	2.16	\$15.50
NW40x16-RW	1-1/2x3/4	.76	0.20	2.16	\$15.50
NW40x25-RW	1-1/2x1	1.01	0.20	2.16	\$15.50
NW50x10-RW	2x1/2	.51	0.20	2.95	\$19.50
NW50x16-RW	2x3/4	.76	0.20	2.95	\$19.50
NW50x25-RW	2x1	1.01	0.20	2.95	\$19.50
NW50x40-RW	2x1-1/2	1.51	0.20	2.95	\$19.50

Internal weld, accepts traditional inch tubing

BORED WELD FLANGE 304 STAINLESS STEEL



PART NUMBER	BORE SIZE	A	B	C	UNIT PRICE
NW10-B25	1/4"	0.20		0.26	\$9.00
NW10-B38	3/8"	0.20		0.38	\$9.00
NW10-B60	1/2"	0.20	0.51	0.45	\$9.00
NW16-B25	1/4"	0.20		0.26	\$9.00
NW16-B38	3/8"	0.20		0.38	\$9.00
NW16-B50	1/2"	0.20	0.51	0.45	\$9.00
NW16-B75	3/4"	0.20	0.76	0.68	\$9.00
NW25-B25	1/4"	0.20		0.26	\$10.25
NW25-B38	3/8"	0.20		0.38	\$10.25
NW25-B50	1/2"	0.20	0.51	0.45	\$10.25
NW25-B75	3/4"	0.20	0.76	0.71	\$10.25
NW25-B100	1"	0.20	1.01	0.94	\$10.25
NW40-B25	1/4"	0.20		0.26	\$14.25
NW40-B38	3/8"	0.20		0.38	\$14.25
NW40-B50	1/2"	0.20	0.51	0.45	\$14.25
NW40-B75	3/4"	0.20	0.76	0.71	\$14.25
NW40-B100	1"	0.20	1.01	0.94	\$14.25
NW40-B150	1-1/2"	0.20	1.51	1.44	\$14.25
NW50-B25	1/4"	0.20		0.26	\$21.25
NW50-B38	3/8"	0.20		0.38	\$21.25
NW50-B50	1/2"	0.20	0.51	0.45	\$21.25
NW50-B75	3/4"	0.20	0.76	0.71	\$21.25
NW50-B100	1"	0.20	1.01	0.94	\$21.25
NW50-B150	1-1/2"	0.20	1.51	1.44	\$21.25
NW50-B200	2"	0.20	2.01	1.94	\$21.25

Traditional inch tube outer diameters



HIGHVAC, Co.

7191 SE 182nd Place, Inglis, Florida 34449

Phone : (352) 447-7033 Fax : (352) 447-1222

Shop online: WWW.HIGHVAC.NET

