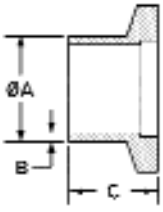


# HIGHVAC NW FLANGES AND HARDWARE

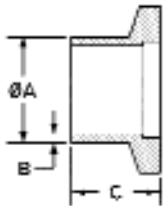
NW FLANGE COMPONENTS



## SHORT WELD STUB FLANGE 304 STAINLESS STEEL

PART NUMBER	TUBE SIZE	A	B	C	UNIT PRICE
NW10-050-SS	1/2"	.50	.07	.50	\$9.50
NW16-050-SS	1/2"	.50	.07	.50	\$9.50
NW16-075-SS	3/4"	.75	.07	.50	\$9.50
NW25-100-SS	1"	1.00	.07	.50	\$10.50
NW40-150-SS	1-1/2"	1.50	.07	.75	\$14.50
NW50-200-SS	2"	2.00	.07	.75	\$21.50

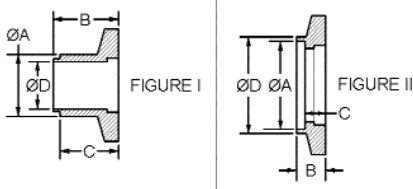
Butt weld flange, traditional inch tube diameters



## SHORT WELD STUB FLANGE 6061-T6 ALUMINUM

PART NUMBER	TUBE SIZE	A	B	C	UNIT PRICE
NW16-050-AS	1/2"	.50	.07	.50	\$8.00
NW16-075-AS	3/4"	.75	.07	.50	\$8.00
NW25-100-AS	1"	1.00	.07	.50	\$8.50
NW40-150-AS	1-1/2"	1.50	.07	.75	\$11.00
NW50-200-AS	2"	2.00	.07	.75	\$17.50

Butt weld flange, traditional inch tube diameters

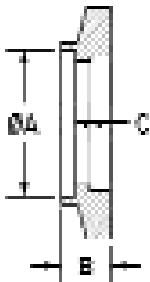


## SOCKET WELD FLANGE - 304 STAINLESS

PART NUMBER	FIGURE	TUBE SIZE	A	B	OFFSET C	D	UNIT PRICE
NW10-050-SF	I	1/2"x.04	.50	.56	.50	.42	\$10.00
NW16-050-SF	I	1/2"x.04	.50	.56	.50	.42	\$10.00
NW16-075-SF	I	3/4"x.04	.75	.56	.50	.67	\$10.00
NW25-100-SF	II	1"	1.01	.50	.17	1.13	\$10.50
NW40-150-SF	II	1-1/2"	1.51	.50	.21	1.75	\$14.50
NW50-200-SF	II	2"	2.01	.62	.23	2.25	\$21.50

Internal weld flange, accepts traditional tubing

## BRAZE SOCKET WELD FLANGE BRASS



PART NUMBER	TUBE SIZE	A	B	OFFSET C	UNIT PRICE
NW16-050-BF	1/2"	.51	.50	.25	\$7.25
NW16-062-BF	5/8"	.64	.50	.25	\$7.25
NW16-075-BF	3/4"	.76	.50	.25	\$8.50
NW25-100-BF	1"	1.01	.50	.25	\$9.50
NW25-112-BF	1-1/8"	1.14	.50	.25	\$10.00
NW40-150-BF	1-1/2"	1.51	.50	.25	\$14.50
NW40-162-BF	1-5/8"	1.64	.50	.25	\$14.50
NW50-200-BF	2"	2.01	.62	.25	\$23.25
NW50-212-BF	2-1/8"	2.14	.62	.25	\$23.25

Braze weld, accepts traditional copper tubing



HIGHVAC, Co.

7191 SE 182nd Place, Inglis, Florida 34449

Phone : (352) 447-7033 Fax : (352) 447-1222

Shop online: WWW.HIGHVAC.NET

