

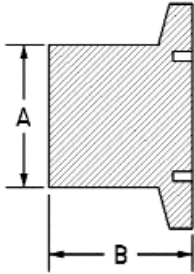
HIGHVAC NW FLANGES AND HARDWARE

NW FLANGE COMPONENTS

UNBORED STUB FLANGE - 304 STAINLESS

| PART NUMBER | A | B | UNIT PRICE |
|-------------|------|------|------------|
| NW10-050-US | 0.75 | 0.75 | \$11.25 |
| NW16-075-US | 0.75 | 0.75 | \$11.25 |
| NW25-100-US | 1.00 | 0.75 | \$13.50 |
| NW40-150-US | 1.50 | 1.00 | \$19.00 |
| NW50-200-US | 2.00 | 1.00 | \$26.25 |

Modify to your specifications!



UNBORED STUB FLANGE - ALUMINUM

| | | | |
|-------------|------|------|---------|
| NW10-050-UA | 0.75 | 0.75 | \$8.50 |
| NW16-075-UA | 0.75 | 0.75 | \$8.50 |
| NW25-100-UA | 1.00 | 0.75 | \$10.00 |
| NW40-150-UA | 1.50 | 1.00 | \$13.00 |
| NW50-200-UA | 2.00 | 1.00 | \$17.00 |

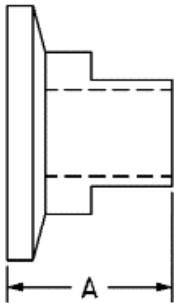
Modify to your specifications!

UNBORED STUB FLANGE - BRASS

| PART NUMBER | A | B | UNIT PRICE |
|-------------|------|------|------------|
| NW10-050-UB | 0.75 | 0.75 | \$9.50 |
| NW16-075-UB | 0.75 | 0.75 | \$9.50 |
| NW25-100-UB | 1.00 | 0.75 | \$12.00 |
| NW40-150-UB | 1.50 | 1.00 | \$14.00 |
| NW50-200-UB | 2.00 | 1.00 | \$19.00 |

Modify to your specifications!

LEAK DETECTOR TEST PORT ADAPTOR



| PART NUMBER | TEST PORT | A | UNIT PRICE |
|----------------|-----------|----|------------|
| NW16-075-112LD | 1-1/8" | 2" | \$57.50 |
| NW25-100-112LD | 1-1/8" | 2" | \$57.50 |
| NW40-150-112LD | 1-1/8" | 2" | \$63.00 |
| NW50-200-112LD | 1-1/8" | 2" | \$68.50 |
| NW16-075-200LD | 2" | 2" | \$74.00 |
| NW25-100-200LD | 2" | 2" | \$79.50 |
| NW40-150-200LD | 2" | 2" | \$83.00 |
| NW50-200-200LD | 2" | 2" | \$88.50 |

304 SS, Adapts test port to NW, fits leak detectors



HIGHVAC, Co.

7191 SE 192nd Place, Inglis, Florida 34449

Phone : (352) 447-7033 Fax : (352) 447-1222

Shop online: WWW.HIGHVAC.NET

