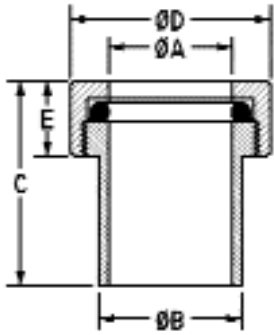


# VACUUM COUPLING DIMENSIONS

## BRASS, STAINLESS, BRASS/STAINLESS VACUUM COUPLINGS



**STYLE KM  
THIN WALL**



PART NUMBER	TUBE OD	TUBE					O-RING			
		A	B	C	D	E	NUMBER	SS	Brass	
06-KM	1/16	.072	3/8	1 5/16	1/2	5/8	2-003	\$30	\$20	
12-KM	1/8	.136	3/8	1 5/16	1/2	5/8	2-006	\$30	\$20	
18-KM	3/16	.199	3/8	1 5/16	5/8	5/8	2-008	\$30	\$20	
25-KM	1/4	.265	3/8	1 5/16	5/8	5/8	2-010	\$30	\$20	
31-KM	5/16	.328	1/2	1 5/16	7/8	5/8	2-011	\$32	\$22	
38-KM	3/8	.390	1/2	1 5/16	7/8	5/8	2-012	\$32	\$22	
50-KM	1/2	.515	5/8	1 5/16	7/8	5/8	2-014	\$35	\$25	
62-KM	5/8	.640	3/4	1 1/2	1 3/16	3/4	2-114	\$38	\$28	
75-KM	3/4	.765	7/8	1 5/8	1 3/8	3/4	2-116	\$40	\$30	
87-KM	7/8	.890	1	1 5/8	1 3/8	3/4	2-118	\$45	\$35	
100-KM	1	1.015	1 1/8	1 7/8	1 5/8	3/4	2-120	\$50	\$40	
112-KM	1 1/8	1.140	1 1/4	1 7/8	1 7/8	3/4	2-216	\$65	\$43	
125-KM	1 1/4	1.265	1 1/2	2	1 7/8	3/4	2-218	\$80	\$45	
138-KM	1 3/8	1.390	1 5/8	2 1/8	2	7/8	2-220	\$105	\$55	
150-KM	1 1/2	1.515	1 3/4	2 1/4	2 1/4	7/8	2-222	\$120	\$65	
162-KM	1 5/8	1.640	1 7/8	2 1/4	2 3/8	7/8	2-223	\$130	\$80	
200-KM	2	2.015	2 1/4	2 1/4	2 3/4	7/8	2-226	\$140	\$90	

NW FLANGE COMPONENTS

- "O" Ring Groove Machined into Retainer Ring
- I.D. Dimension Allows for Tube Variations

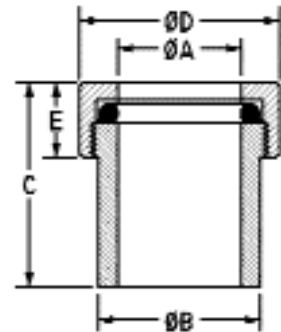
**How to order:**

**Brass** - Add "B" to prefix

**Stainless** - Add "S" to prefix

## STYLE K - THICK WALL

PART NUMBER	TUBE OD	TUBE					O-RING			
		A	B	C	D	E	NUMBER	SS	Brass	
06-K	1/16	.072	3/8	1 5/16	1/2	5/8	2-003	\$30	\$20	
12-K	1/8	.136	3/8	1 5/16	1/2	5/8	2-006	\$30	\$20	
18-K	3/16	.199	3/8	1 5/16	5/8	5/8	2-008	\$30	\$20	
25-K	1/4	.265	1/2	1 5/16	5/8	5/8	2-010	\$30	\$20	
31-K	5/16	.328	1/2	1 5/16	7/8	5/8	2-011	\$32	\$22	
38-K	3/8	.390	5/8	1 5/16	7/8	5/8	2-012	\$32	\$22	
50-K	1/2	.515	3/4	1 5/16	7/8	5/8	2-014	\$35	\$25	
62-K	5/8	.640	7/8	1 1/2	1 3/16	3/4	2-114	\$38	\$28	
75-K	3/4	.765	1 1/8	1 5/8	1 3/8	3/4	2-116	\$40	\$30	
87-K	7/8	.890	1 1/4	1 5/8	1 3/8	3/4	2-118	\$45	\$35	
100-K	1	1.015	1 3/8	1 7/8	1 5/8	3/4	2-120	\$50	\$40	
112-K	1 1/8	1.140	1 1/2	1 7/8	1 7/8	3/4	2-216	\$65	\$43	
125-K	1 1/4	1.265	1 11/16	2	1 7/8	3/4	2-218	\$80	\$45	
138-K	1 3/8	1.390	1 13/16	2 1/8	2	7/8	2-220	\$105	\$55	
150-K	1 1/2	1.515	2	2 1/4	2 1/4	7/8	2-222	\$120	\$65	
162-K	1 5/8	1.640	2 1/8	2 1/4	2 3/8	7/8	2-223	\$130	\$80	
200-K	2	2.015	2 1/2	2 1/4	2 3/4	7/8	2-226	\$140	\$90	



**HIGHVAC, Co.**

**7191 SE 182nd PL. Inglis, Florida 34449**

**Phone : (352) 447-7033 Fax : (352) 447-1222**

**Shop online: WWW.HIGHVAC.NET**

