

HIGHVAC ISO ELBOWS & TEES

45° ELBOWS 304 STAINLESS STEEL



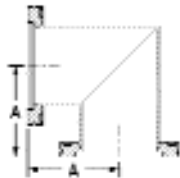
PART NUMBER	A	UNIT PRICE
ISO63-250-E45	3.25	\$229.75
ISO80-300-E45	3.93	\$254.75
ISO100-400-E45	5.02	\$289.75
ISO160-600-E45	9.71	\$559.75

90° ELBOWS - RADIUS 304 STAINLESS STEEL



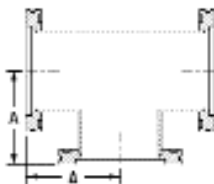
PART NUMBER	A	UNIT PRICE
ISO63-250-E90	4.00	\$204.75
ISO80-300-E90	4.75	\$254.75
ISO100-400-E90	6.25	\$264.75
ISO160-600-E90	9.25	\$569.75
ISO200-800-E90	12.25	\$594.75
ISO250-1000-E90	15.25	\$902.75

90° ELBOWS - MITERED 304 STAINLESS STEEL



PART NUMBER	A	UNIT PRICE
ISO63-250-E90M	3.46	\$194.75
ISO80-300-E90M	3.86	\$234.75
ISO100-400-E90M	4.25	\$249.75
ISO160-600-E90M	5.43	\$429.75
ISO200-800-E90M	6.61	\$589.75
ISO250-1000-E90M	8.19	\$1349.75

TEE - 304 STAINLESS STEEL



PART NUMBER	A	UNIT PRICE
ISO63-250-T	3.25	\$289.75
ISO80-300-T	3.50	\$389.75
ISO100-400-T	4.13	\$399.75
ISO160-600-T	5.38	\$609.75
ISO200-800-T	7.38	\$1014.75
ISO250-1000-T	9.88	\$1574.75
ISO320-1200-T	10.87	Call For Quote
ISO400-1600-T	13.37	Call For Quote
ISO500-2000-T	15.87	Call For Quote

ISO63 - ISO500
LARGE FLANGES