

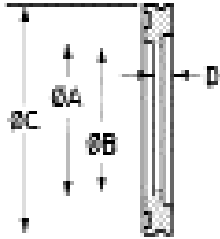
HIGHVAC ISO63 - ISO500 LARGE FLANGES

SHORT WELD FLANGE 304 STAINLESS STEEL

PART NUMBER	TUBE OD	THRU HOLE			OFFSET D	UNIT PRICE
		A	B	C		
ISO63-250-SF	2.50"	2.51	2.37	3.74	.25	\$52.75
ISO80-300-SF	3.00"	3.01	2.87	4.33	.25	\$66.75
ISO100-400-SF	4.00"	4.01	3.87	5.12	.25	\$71.75
ISO160-600-SF	6.00"	6.02	5.83	7.09	.25	\$104.75
ISO200-800-SF	8.00"	8.02	7.76	9.45	.25	\$169.75
ISO250-1000-SF	10.00"	10.02	9.75	11.42	.25	\$209.75
ISO320-1200-SF	12.75"	12.77	12.42	14.57	.38	\$372.75
ISO400-1600-SF	16.00"	16.02	15.50	17.72	.38	\$515.75
ISO500-2000-SF	20.00"	20.02	19.50	21.65	.38	\$645.75

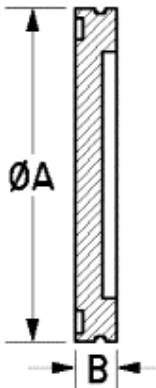
SHORT WELD FLANGE - ALUMINUM

PART NUMBER	TUBE OD	THRU HOLE			OFFSET D	UNIT PRICE
		A	B	C		
ISO63-250-ASF	2.50"	2.51	2.37	3.74	.25	\$42.75
ISO80-300-ASF	3.00"	3.01	2.87	4.33	.25	\$53.75
ISO100-400-ASF	4.00"	4.01	3.87	5.12	.25	\$59.75
ISO160-600-ASF	6.00"	6.02	5.83	7.09	.25	\$99.75
ISO200-800-ASF	8.00"	8.02	7.76	9.45	.25	\$149.75
ISO250-1000-ASF	10.00"	10.02	9.75	11.42	.25	\$174.75
ISO320-1200-ASF	12.75"	12.77	12.42	14.57	.38	\$313.50
ISO400-1600-ASF	16.00"	16.02	15.50	17.72	.38	\$423.50
ISO500-2000-ASF	20.00"	20.02	19.50	21.65	.38	\$533.50



BLANK FLANGE - 304 STAINLESS STEEL

PART NUMBER	A	B	UNIT PRICE
ISO80-300-SB	4.33	.47	\$71.75
ISO100-400-SB	5.12	.47	\$77.75
ISO160-600-SB	7.09	.47	\$104.75
ISO200-800-SB	9.45	.47	\$174.75
ISO250-1000-SB	11.42	.47	\$229.75
ISO320-1200-SB	14.57	.67	\$550.50
ISO400-1600-SB	17.72	.67	\$640.50



BLANK FLANGE - ALUMINUM

PART NUMBER	A	B	UNIT PRICE
ISO80-300-AB	4.33	.47	\$56.75
ISO100-400-AB	5.12	.47	\$62.75
ISO160-600-AB	7.09	.47	\$84.75
ISO200-800-AB	9.45	.47	\$144.75
ISO250-1000-AB	11.42	.47	\$184.75
ISO320-1200-AB	14.57	.67	\$366.75
ISO400-1600-AB	17.72	.67	\$462.75
ISO500-2000-AB	21.65	.67	\$582.75

ISO63 - ISO500
LARGE FLANGES