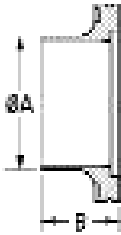


HIGHVAC ISO63 - ISO500 LARGE FLANGES

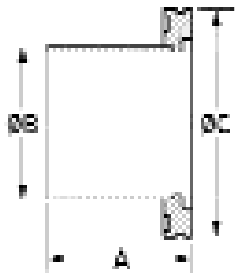
STUB WELD FLANGE - ALUMINUM



PART NUMBER	A	B	UNIT PRICE
ISO63-250-AS	2.50	1.50	\$55.75
ISO80-300-AS	3.00	1.50	\$69.75
ISO100-400-AS	4.00	1.50	\$72.75
ISO160-600-AS	6.00	1.50	\$104.75
ISO200-800-AS	8.00	1.50	\$169.75
ISO250-1000-AS	10.00	1.50	\$224.75
ISO320-1200-AS	12.00	1.50	\$402.75

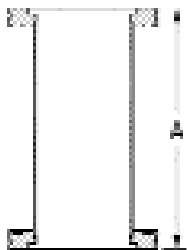
ISO63 - ISO500
LARGE FLANGES

HALF NIPPLE 304 STAINLESS STEEL



PART NUMBER	A	B	FLANGE O.D. C	UNIT PRICE
ISO63-250-ISO	3.940	2.50"	3.74	\$88.75
ISO80-300-ISO	3.940	3.00"	4.33	\$99.75
ISO100-400-ISO	3.940	4.00"	5.12	\$119.75
ISO160-600-ISO	3.940	6.00"	7.09	\$154.75
ISO200-800-ISO	3.940	8.00"	9.45	\$249.75
ISO250-1000-ISO	3.940	10.00"	11.42	\$318.75
ISO320-1200-ISO	3.940	12.75"	14.57	Quote
ISO400-1600-ISO	3.940	16.00"	17.72	Quote
ISO500-2000-ISO	3.940	20.00"	21.65	Quote

ISO NIPPLES - 304 STAINLESS STEEL



PART NUMBER	SHORT	LONG	UNIT PRICE
ISO63-250-NS	4.18		\$199.75
ISO63-250-NL		6.92	\$209.75
ISO80-300-NS	4.18		\$239.75
ISO80-300-NL		7.72	\$249.75
ISO100-400-NS	4.18		\$254.75
ISO100-400-NL		8.50	\$264.75
ISO160-600-NS	4.18		\$394.75
ISO160-600-NL		10.86	\$414.75
ISO200-800-NS	4.18		\$525.75
ISO200-800-NL		13.22	\$539.75
ISO250-1000-NS	4.18		\$704.75
ISO250-1000-NL		16.38	\$730.75
ISO320-1200-NL		19.76	\$1001.00
ISO400-1600-NL		19.76	Call For Quote
ISO500-2000-NS		19.76	Call For Quote



HIGHVAC, Co.

7191 SE 182nd Place, Inglis, Florida 34449

Phone : (352) 447-7033 Fax : (352) 447-1222

Shop online: WWW.HIGHVAC.NET

