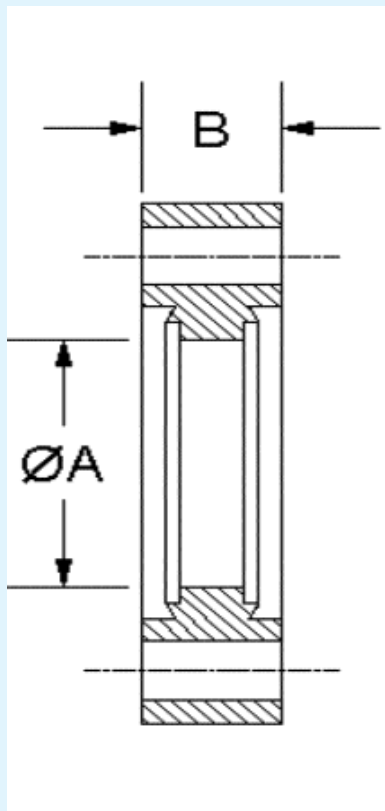


# HIGHVAC CF DOUBLE SIDED FLANGES & HARDWARE

## CF FLANGES - DOUBLE SIDED

CONFLAT  
FLANGES



PART NUMBER	CF SIZE	A	B	BOLT HOLES NO.	DIA./THREAD	UNIT PRICE
CF133-000-D	1.33"	-	0.300	6	0.172	\$28.75
CF133-025-D	1.33"	0.255	0.300	6	0.172	\$28.75
CF133-038-D	1.33"	0.380	0.300	6	0.172	\$28.75
CF133-050-D	1.33"	0.505	0.300	6	0.172	\$28.75
CF133-075-D	1.33"	0.630	0.300	6	0.172	\$28.75
CF133-000-D-.5001.33"		-	0.500	6	0.172	\$28.75
CF133-075-D-.5001.33"		0.630	0.500	6	0.172	\$28.75
CF212-000-D	2.12"	-	0.470	4	0.265	\$30.75
CF212-100-D	2.12"	1.010	0.470	4	0.265	\$30.75
CF275-000-D	2.75"	-	0.500	6	0.265	\$49.75
CF275-025-D	2.75"	0.255	0.500	6	0.265	\$49.75
CF275-050-D	2.75"	0.505	0.500	6	0.265	\$49.75
CF275-075-D	2.75"	0.760	0.500	6	0.265	\$49.75
CF275-100-D	2.75"	1.010	0.500	6	0.265	\$49.75
CF275-125-D	2.75"	1.260	0.500	6	0.265	\$49.75
CF275-150-D	2.75"	1.510	0.500	6	0.265	\$49.75
CF275-000-D-.7502.75"		-	0.750	6	0.265	\$59.75
CF275-150-D-.7502.75"		1.510	0.750	6	0.265	\$59.75
CF338-000-D	3.38"	-	0.620	8	0.332	\$71.75
CF338-150-D	3.38"	1.510	0.620	8	0.332	\$71.75
CF338-200-D	3.38"	2.010	0.620	8	0.332	\$71.75
CF450-000-D	4.50"	-	0.680	8	0.332	\$97.75
CF450-150-D	4.50"	1.510	0.680	8	0.332	\$97.75
CF450-200-D	4.50"	2.010	0.680	8	0.332	\$97.75
CF450-250-D	4.50"	2.510	0.680	8	0.332	\$97.75
CF462-000-D	4.62"	-	0.750	10	0.332	\$119.75
CF462-300-D	4.62"	3.010	0.750	10	0.332	\$119.75
CF600-000-D	6.00"	-	0.780	16	0.332	\$179.75
CF600-400-D	6.00"	4.010	0.780	16	0.332	\$179.75
CF675-000-D	6.75"	-	0.840	18	0.332	\$184.75
CF675-500-D	6.75"	5.010	0.840	18	0.332	\$184.75
CF800-000-D	8.00"	-	0.870	20	0.332	\$194.75
CF800-600-D	8.00"	6.020	0.870	20	0.332	\$194.75
CF1000-000-D	10.00"	-	0.970	24	0.332	\$309.75
CF1000-800-D	10.00"	8.020	0.970	24	0.332	\$309.75
CF1325-000-D	13.25"	-	1.120	30	0.390	\$700.75
CF1325-1000-D	13.25"	10.030	1.120	30	0.390	\$700.75
CF1400-000-D	14.00"	-	1.120	30	0.390	\$1000.75
CF1400-1200-D	14.00"	12.030	1.120	30	0.390	\$1000.75
CF1650-000-D	16.50"	-	1.120	36	0.390	Call For Quote
CF1650-1400-D	16.50"	14.030	1.120	36	0.390	Call For Quote